



Since 2003

# Company Profile

01 August 2012

**JISSEN KANKYO KENKYUSHO Co.,LTD.**  
(Practical Environmental Institute)

**JAPAN**

■ **Head Office**

4F, Marumoto Building,  
17-16 Tsubaki-cho, Nakamura-ku,  
Nagoya, 453-0015 Japan  
Tel : +81-(0)52-452-0729  
Fax : +81-(0)52-453-0029  
E-mail : [info@jissen.co.jp](mailto:info@jissen.co.jp)  
URL: <http://www.jissen.cpo.jp>



# Company Profile

## ■ Company Profile

Trade name : Jissen Kankyo Kenkyu Sho Co.,LTD.

Establishment : 15 September 2003

Capital : ￥ 50,000,000

Board Member :

President : Hisashi MIZUNO

Vice-President : Shin IMAI, Ph.D.

Executive Director : Masaaki YAMADA

Executive Director : Seiichi MIYOSHI

Inspector : Tomohisa KATO

Main Bank : Mitsubishi Tokyo UFJ Bank,  
Nagoya Station Branch

## ■ Head Office

4F, Marumoto Building,  
17-16 Tsubaki-cho, Nakamura-ku,  
Nagoya, 453-0015 Japan

Tel : +81-(0)52-452-0729

Fax : +81-(0)52-453-0029

E-mail : [info@jissen.co.jp](mailto:info@jissen.co.jp)

URL: <http://www.jissen.cpo.jp>

<http://www.ipros.jp/company/detail/309567/>

## ■ Yokohama Office

433-2-302 Sugeta-cho,  
Kanagawaku, Yokohama  
221-0864 Japan

Tel : +81-(0)80-2617-6848

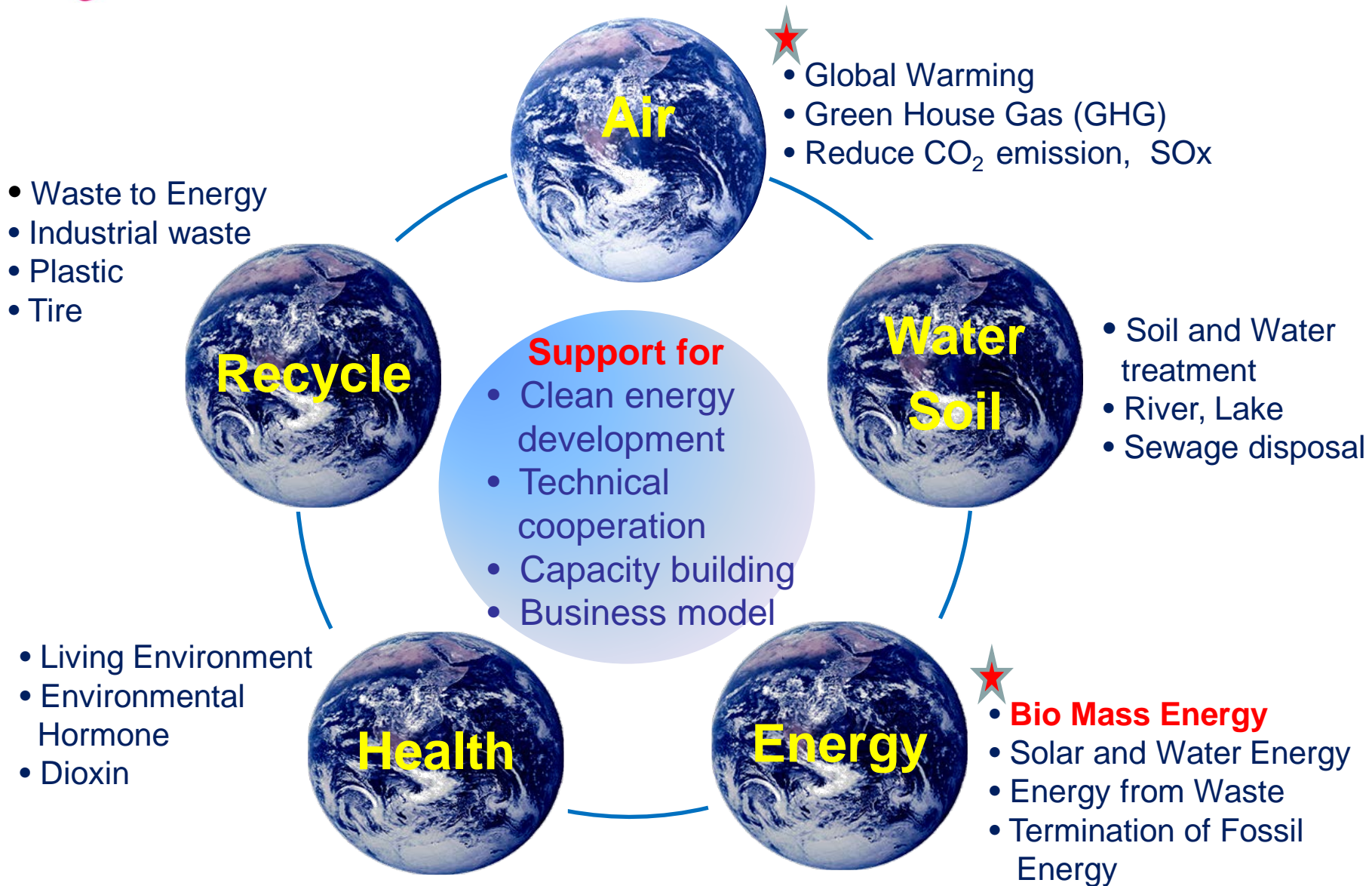
Fax : +81-(0)45-472-7702



## JKK philosophy

- *Jissen Kankyo Kenkyusho Co., Ltd.* (Practical Environmental Institute: JKK) has been working for the environmental consideration in particular reducing the GHG and CO<sub>2</sub> emission that is causing serious problems on the human safety life.
- We have to take an immediate action by promoting Bio-mass clean energy that is a carbon neutral under the Kyoto Protocol (1997 COP3) and reduce CO<sub>2</sub> to meet with the required target.
- The rural poor causing by the climate change is a majority of being seriously damaged and the climate change has been badly affecting around the world in terms of the water resources, global warming etc.
- JKK would like to work for the global environmental protection and enhancing the Rural Socio-Economic Development to meet with the MDG1 of the United Nations.

# Strategic Domain





## Bio mass Environmental Cycle



Industrial waste



Agriculture production

Carbonization

- Food waste
- Raw garbage
- Bio mass (oil seeds)
- Others

- CO<sub>2</sub>

Clean world & sustainable  
Development

Soil / water  
Improvement/  
active carbon

Bio- Char

BDF

Superheating  
Steam System  
(SSS)

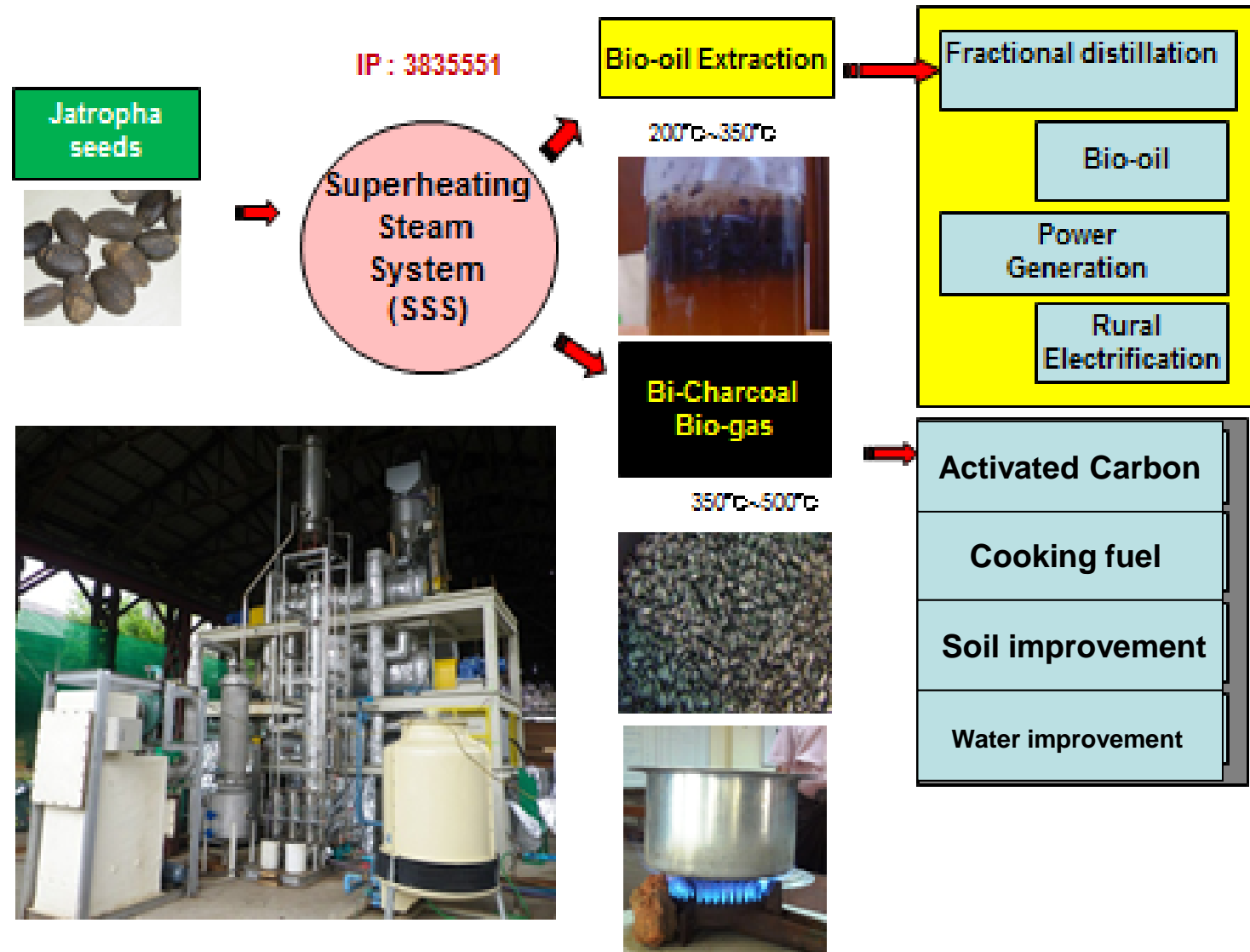


- Extraction of Bio Fuel
- Bio-Char
- Bio-Gas

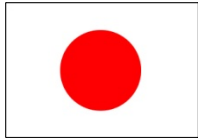
BDF/Bio-Char



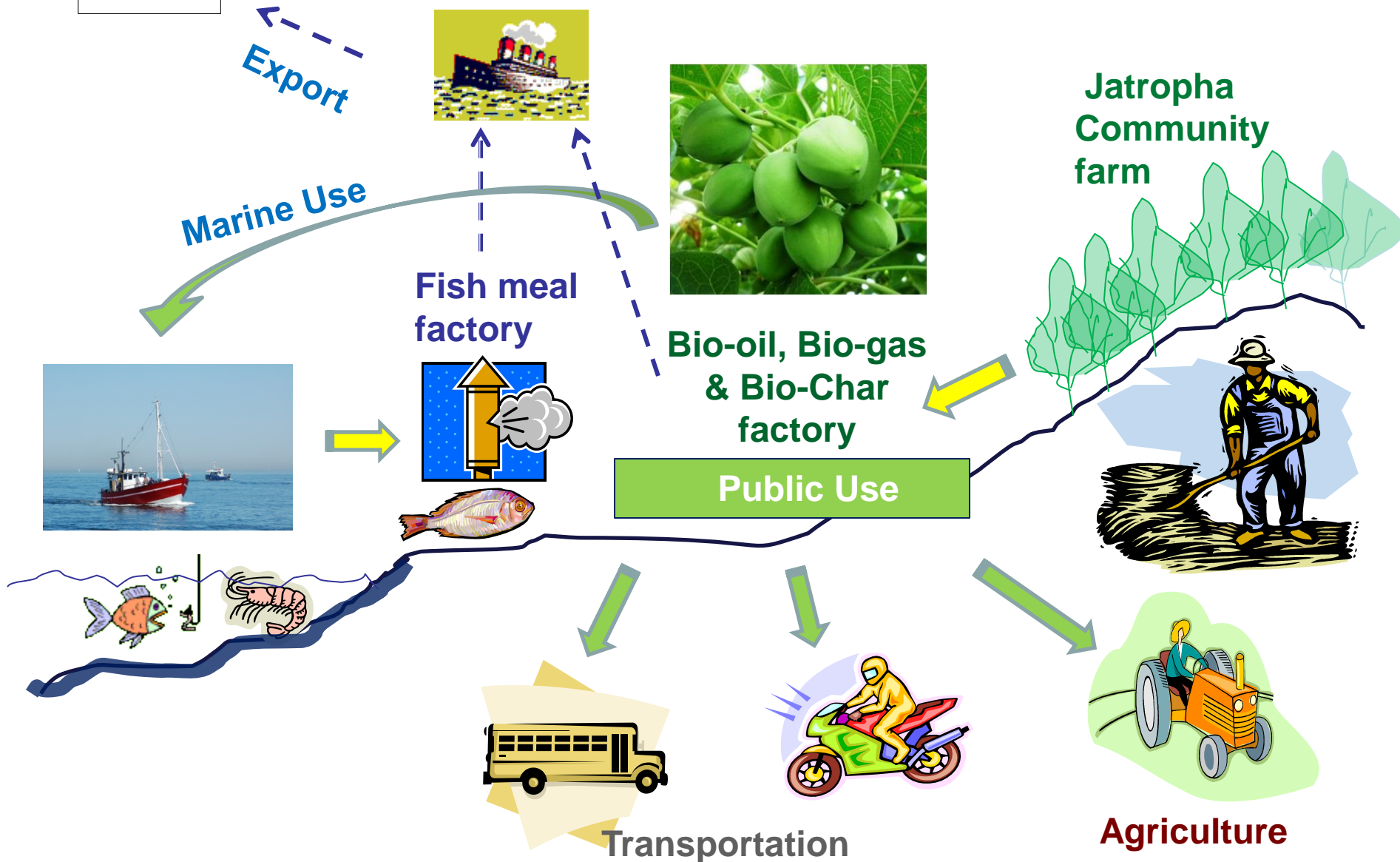
## Bio-oil, Bio-char and Bio-gas project by SSS







# Perspective of Social Business





# JKK Products

Carbonization and Dry System  
by  
Superheating Steam System (SSS)





# 1<sup>st</sup> product for Carbonization



- Capacity  
140L
- Working  
temperature  
500°C

2004 July



# Coating Drying System



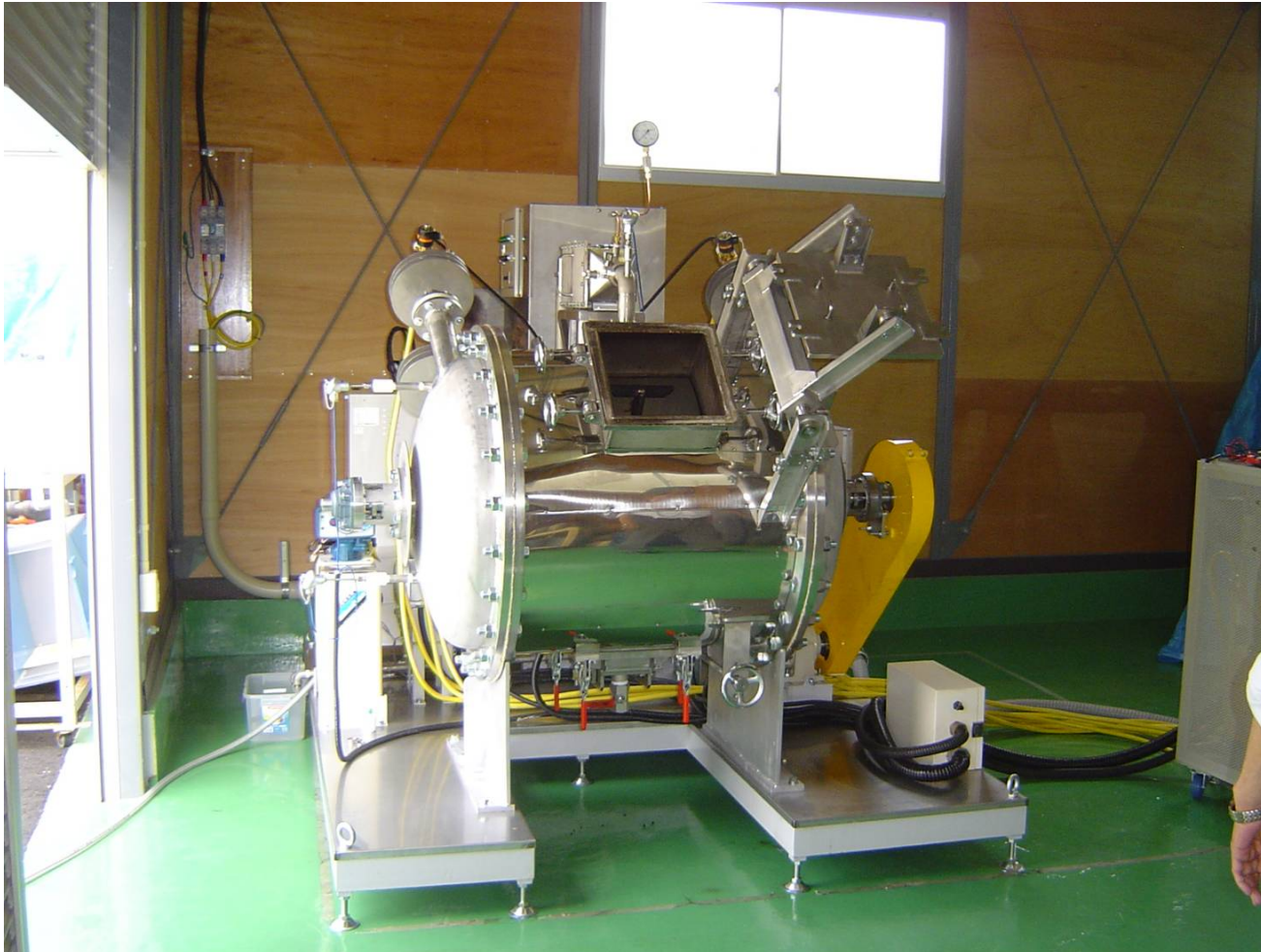
- Capacity  
2000L
- Working  
Temperature  
500 °C

2006 August





# Coating-Waste Carbonization System



- Capacity  
400L
- Working  
Temperature  
430°C

2007 August





# Portable Carbonization System



- Capacity  
30L
- Working  
Temperature  
524°C

2007 December



# Carbonization System for Plant Nursery



- Capacity  
400L
- Working Temperature  
300 °C

2008 October



# Polluted Sludge Drying System



- Capacity  
1500L

2008 October





# Waste Oil treatment System



- Capacity  
1,000 L / day
- Working  
Temperature  
300°C

2010 Feb



# Bio Diesel Extraction System



- Capacity  
20 kg
- Working  
Temperature  
400 °C

2010 May

This Superheating  
Steam System is  
working in Myanmar.



# Food Processing Waste Drying System



Food processing Factory whole view



1<sup>st</sup> Floor – Food processing waste drying system



2<sup>nd</sup> Floor - Hopper from dehydration machine to drying system

This system can change the food processing waste from the factory to the add-valuable Fertilizer .

Capacity  
2000 kg/ day  
24 hours operation

Dual drying system by  
1) Direct Superheating Steam System and  
2) Indirect Saturated Steam System

2011 May





## Pre-treatment for gasification System



- Capacity  
400kg/2hr x 2 units
- Working  
Temperature  
250 °C

2011 July

This Superheating  
Steam System is  
working in Sapporo.



**Save Our Earth by  
Cultivable, Clean and Renewable  
Bio Energy!**



■ **Head Office**

4F, Marumoto Building,  
17-16 Tsubaki-cho,  
Nakamura-ku,  
Nagoya, 453-0015 Japan  
Tel : +81-(0)52-452-0729  
Fax : +81-(0)52-453-0029  
E-mail : [info@jissen.co.jp](mailto:info@jissen.co.jp)  
URL: <http://www.jissen.cpo.jp>

■ **Yokohama Office**

433-2-302 Sugeta-cho,  
Kanagawa-ku, Yokohama  
221-0864 Japan  
Tel : +81-(0)80-2617-6848  
Fax : +81-(0)45-472-7702

■ **JKK-Myanmar**

Room 1007, 10<sup>th</sup> Floor,  
Bayintnaung Tower (2B),  
Bayintnaung Rd, Ward (4),  
Kamayut Tsp,  
Yangon, Myanmar  
Tel/Fax: +95-1-500663  
+95-973187509 (HP Myanmar)